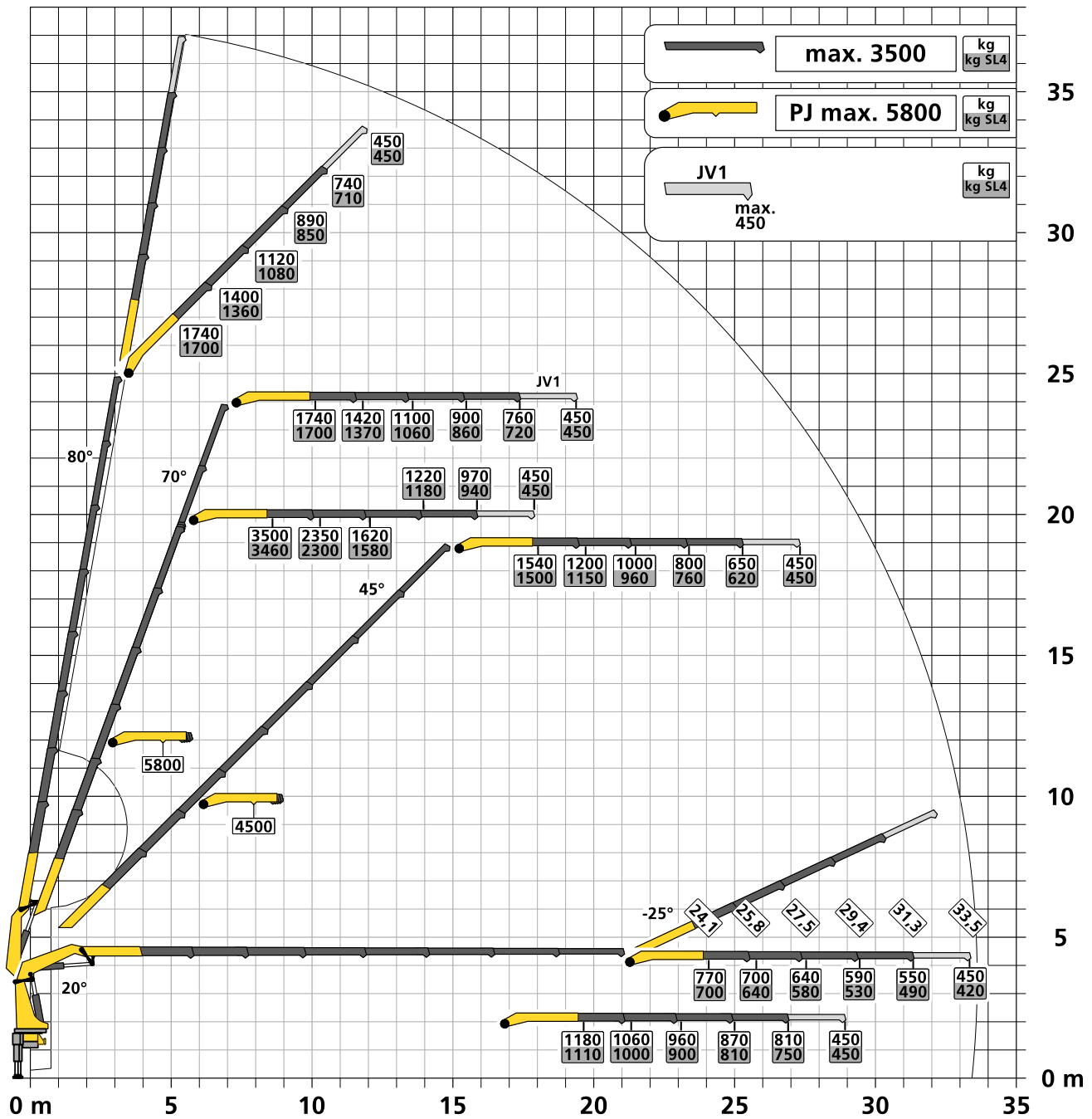


Lifting capacity diagram PK 58.002 TEC G PJ090 CJV1 DPS-C

Subject to change, production tolerances have to be taken into account.

Symbolic crane figure

**DPS-C**  
Dual Power System



Dead weight: JV1  
40kg

When using mechanical boom extensions, the loads shown on the charts need to be reduced by the weight of these extensions.

Height: 4.3m  
Width: 2.4m  
Operating Width: 3m

Tray Length: 6m  
Overall Length: 11.5m  
Payload: 6.5 tonne

We highly recommend to book in our sales rep for a site inspection before booking Zeus for access.